



HEALTH CONNECT PARTNERS
**RADIOLOGY
& IMAGING
CONFERENCE**
2015



HITACHI
Inspire the Next

VISIT US AT BOOTH 205

LOWER DOSE WITH CONFIDENCE

Scenaria™ is Hitachi's lower-dose CT, offering enhanced patient access, rapid workflow and easily scalable design up to 128 slice. Scenaria economically meets a wide range of needs from routine to advanced Cardiac and ED applications.

www.hitachimed.com



Learn more about
Scenaria Dose
Reduction Features.

HITACHI
Inspire the Next



We are happy to have you with us at our 2015 Radiology & Imaging Conference here in sunny Orlando, FL! This conference is a perfect platform to network and connect, develop business relationships, be inspired by thought-provoking education, and discover new technology products. Special thanks to Hitachi, our title sponsor, for their continued support of this unparalleled event.



Over the next few days, our conference will provide you with numerous networking opportunities as well as educational sessions with topics including "The Emerging Era of Choice," "Emergency Preparedness for Imaging Services," and "Inside the NFL." We are also proud to present Lt. Col Rob "Waldo" Waldman as our keynote speaker for a powerful session entitled "Never Fly Solo."

As always, this conference features two Reverse EXPO sessions (Thursday afternoon & Friday morning), sponsored by Perceptive Software, where the Hospital Radiology, Imaging and GPO Executives host the booths while the suppliers walk through the expo hall. And don't miss the Supplier Showcase, open on Wednesday only from 12:00 noon – 4:00 pm in Oceans Ballroom. Stop by to check it out, and if you are interested in having a showcase of your own at the next conference, visit the HCP table in the expo hall to let us know.

Last but certainly not least, I am excited to announce a new conference model that we are launching this fall. Two events – our **2015 Fall Radiology & Imaging Conference** and our **2015 Fall Hospital & Healthcare I.T. Conference** – will be held over one set of dates: **October 5 – 7, 2015**. Registering for both conferences will give you the opportunity to network simultaneously with up to 125 Hospital CIOs & IT Executives and up to 75 Hospital Radiology & Imaging Directors, including over 8 hours of Reverse EXPO time. This allows you to make even more connections without spending any additional time out of the office. Stop by the HCP table in the expo hall to learn more about how it works.

If you need assistance at any time, our staff at the registration desk are happy to help.

Sincerely,

Dan Jewell
Market Sales Manager

Title Sponsor

HITACHI
Inspire the Next

HEALTH CONNECT PARTNERS



Jason Green holds the post of Chief Sales Officer for Health Connect Partners. He has extensive experience in the healthcare industry, working in both large corporate environments and small start-up healthcare organizations. Jason's ability to relate to customers and colleagues has allowed him to foster many long-term relationships throughout the healthcare industry. He loves spending time with customers and engaging about their business, families and ways he can be helpful.

Jason and his wife Dana have two children, Max (11) and Ella Kate (5), who keep him dedicated to a busy social calendar. Ella Kate is involved with dance, gymnastics, cheerleading and ballet. She loves dressing up and raiding the closet for mom's newest outfits, shoes and hats. Max has kicked off his 2015 golf tour with his first tournament at Innisbrook Golf Club just outside of Tampa, FL. He will continue to advance through to many tournaments in many exciting golf resorts in NC, FL, GA and VA. When not studying, he can be found with his clubs and fishing pole heading to the course or tormenting the local alligator in a nearby pond.

During the break in activity, Jason enjoys playing golf, fishing, snow skiing and anything that involves water. This past year he found a new passion for fly fishing as he spent 10 days fishing in the beautiful rivers of the North Carolina Mountains. He is actively involved in his community serving on several charitable volunteer boards. Jason is a graduate of Ohio University. He continues to cheer for the Pittsburgh Steelers, Boston Red Sox, Ohio State Buckeyes and most recently made the switch to the SEC South Carolina Gamecocks.



JASON GREEN
Chief Sales Officer
Hilton Head, SC

David Mason is Co-Founder and CEO of Health Connect Partners. Prior to founding HCP, he was Founder and President of BCX Technology, Inc., a software automation company specializing in supply automation for acute care hospitals. He led the BCX team for eight years and sold the company in 2003 to Omnicell.

David and his wife Tammy have two wonderful children, Alexis (21) and Madison (14). Alexis is married to Zac Morgan and they live in Johnson City, TN, where they both attend physical therapy school at East Tennessee State University. Madison stays busy with music lessons and is very good at piano. An avid boater, David spends his time boating with his family, fishing, diving, lobster hunting, spear fishing, running, swimming and mountain bike riding. David enjoys Corvettes and participates in autocross events in his 2007 Corvette with his local Corvette club. David is a graduate of Nashville State Technical Institute, Chairman of the Board for BCX Foundation (a nonprofit educational foundation for children), a Black Belt in Wado Ryu Karate and an Eagle Scout.



DAVID MASON
Chief Executive Officer
Lebanon, TN

Nelson Hendry, Co-Founder and President, oversees the Providers registration and participation at all HCP Conferences. Prior to founding HCP, he served as Regional Vice President of Corporate Sales for Omnicell, working with large IDN Health Systems and the major GPOs. He was awarded the 2005 Salesman of the Year Award for Omnicell's Specialty Sales. Nelson graduated with a Bachelor of Science degree from Florida State University.

Nelson and his wife Evelyn have three boys. Joseph (26) is a 3D video game artist at Pocket Gems in San Francisco, and enjoys weight lifting in his spare time. Justin (24) is a recent M.I.T. Graduate with a degree in Mechanical Engineering and is now an equity stock trader at Kershner Trading Group in Austin, TX. Taylor (12) is in 6th grade at Berkeley Prep School in Tampa and is a soccer player, fantasy and flag football enthusiast, and loves to do any kind of fishing.



NELSON HENDRY
President
Palm Harbor, FL



HITACHI

Inspire the Next



For information on future sponsorship opportunities, please visit Dan Jewell at the HCP booth in the expo hall.



WEDNESDAY MARCH 4

11:30 am - 4:00 pm:	Provider Registration	Oceans Ballroom
11:30 am - 7:30 pm:	Supplier Registration	Crystal Registration Desk
12:00 pm - 4:00 pm:	Supplier Showcase	Oceans Ballroom
3:00 pm - 3:20 pm:	Supplier Orientation	Crystal Ballroom
4:15 pm - 5:30 pm:	Provider Orientation	Crystal Ballroom
5:30 pm - 6:30 pm:	Welcome Reception	Crystal AB
6:30 pm -	Hospitality Suites	Second Floor

THURSDAY MARCH 5

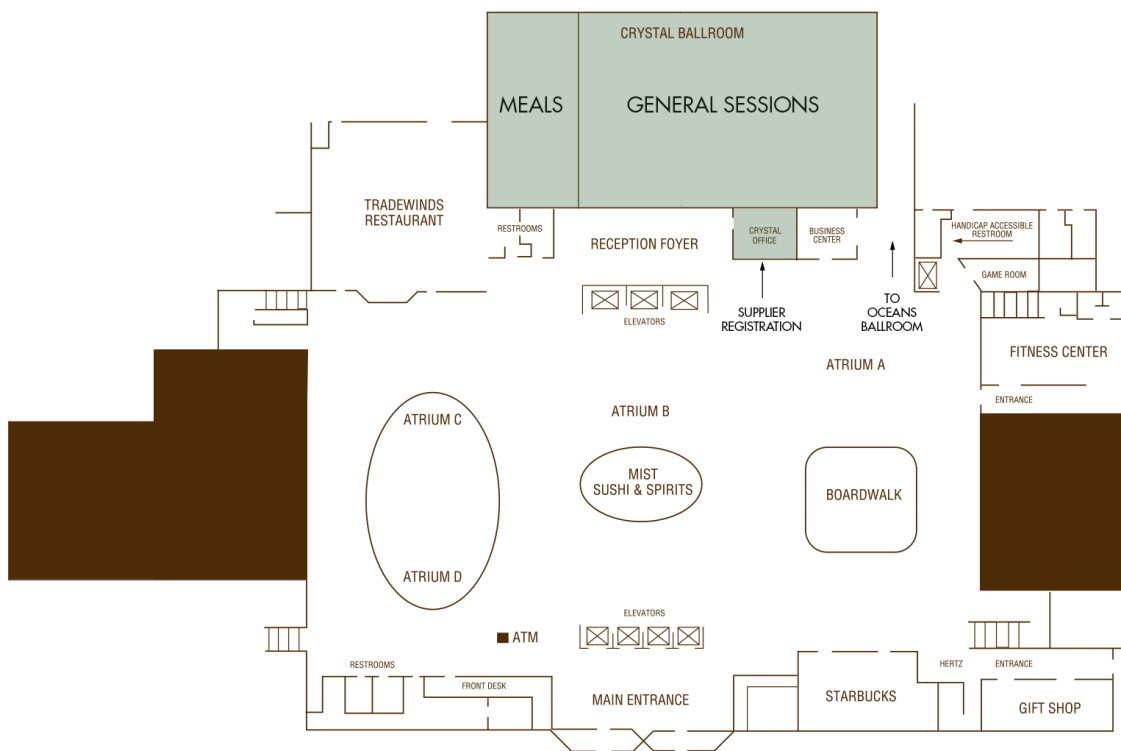
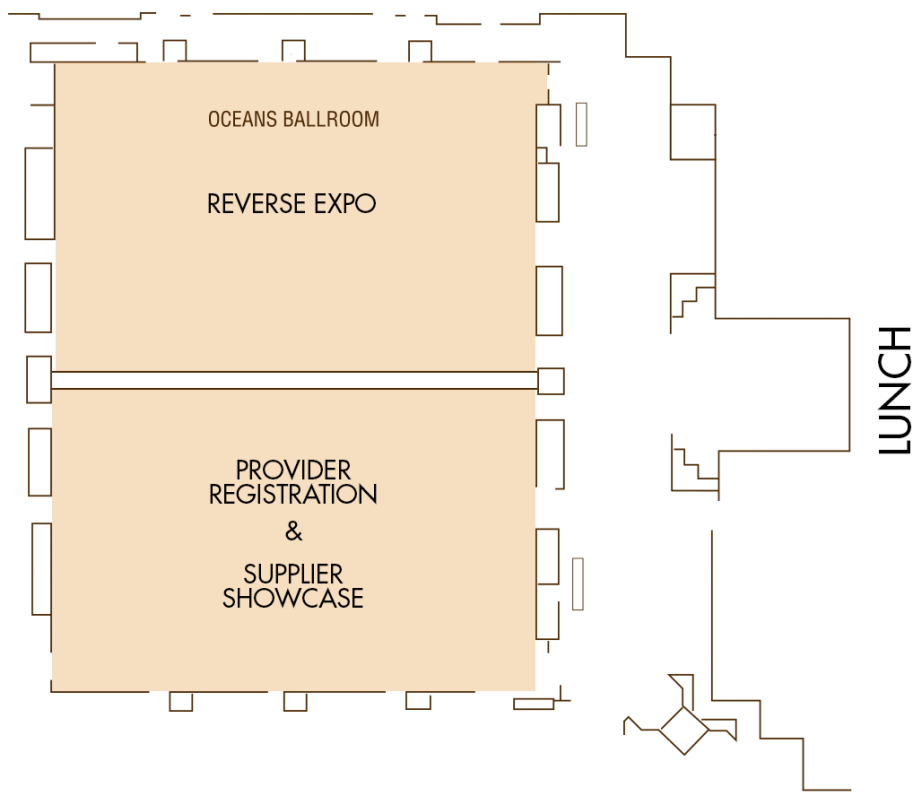
7:00 am - 6:00 pm:	Registration Desk Open	Crystal Registration Desk
7:00 am - 8:00 am:	Breakfast	Crystal AB
8:00 am - 9:30 am:	Opening Remarks & Keynote Address	Crystal Ballroom
9:30 am - 9:45 am:	Coffee Break	Crystal Prefunction
9:45 am - 10:45 am:	Educational Session	Crystal Ballroom
11:00 am - 12:00 pm:	Educational Session	Crystal Ballroom
11:30 am - 1:00 pm:	Lunch	Terrace Lawn
1:15 pm - 2:30 pm:	Educational Session	Crystal Ballroom
3:00 pm - 5:00 pm:	Reverse EXPO Session 1	Oceans Ballroom
6:00 pm - 10:00 pm:	Dinner & Entertainment	SeaWorld's Ports of Call

**Trams will run continuously between the hotel and Ports of Call from 5:50 pm - 10:00 pm.*

FRIDAY MARCH 6

7:00 am - 12:00 pm:	Registration Desk Open	Crystal Registration Desk
7:00 am - 8:00 am:	Breakfast	Crystal AB
8:00 am - 9:00 am:	Educational Session	Crystal Ballroom
9:30 am - 11:30 am:	Reverse EXPO Session 2	Oceans Ballroom

RENAISSANCE ORLANDO AT SEAWORLD





HEALTH CONNECT PARTNERS



SHARE YOUR PRODUCTS, SERVICES & TECHNOLOGY BEFORE THE REVERSE EXPO

**HOSPITAL &
HEALTHCARE I.T.
CONFERENCE**
FALL 15
October 5 - 7
Los Angeles, CA

We have a limited number of 10'x10' showcases available from 12:00 pm - 4:00 pm on the first day of the conference to showcase your company.

**RADIOLOGY
& IMAGING
CONFERENCE**
FALL 15
October 5 - 7
Los Angeles, CA

Supplier Showcase Pricing
\$3,000 per booth package
Does not include attendees

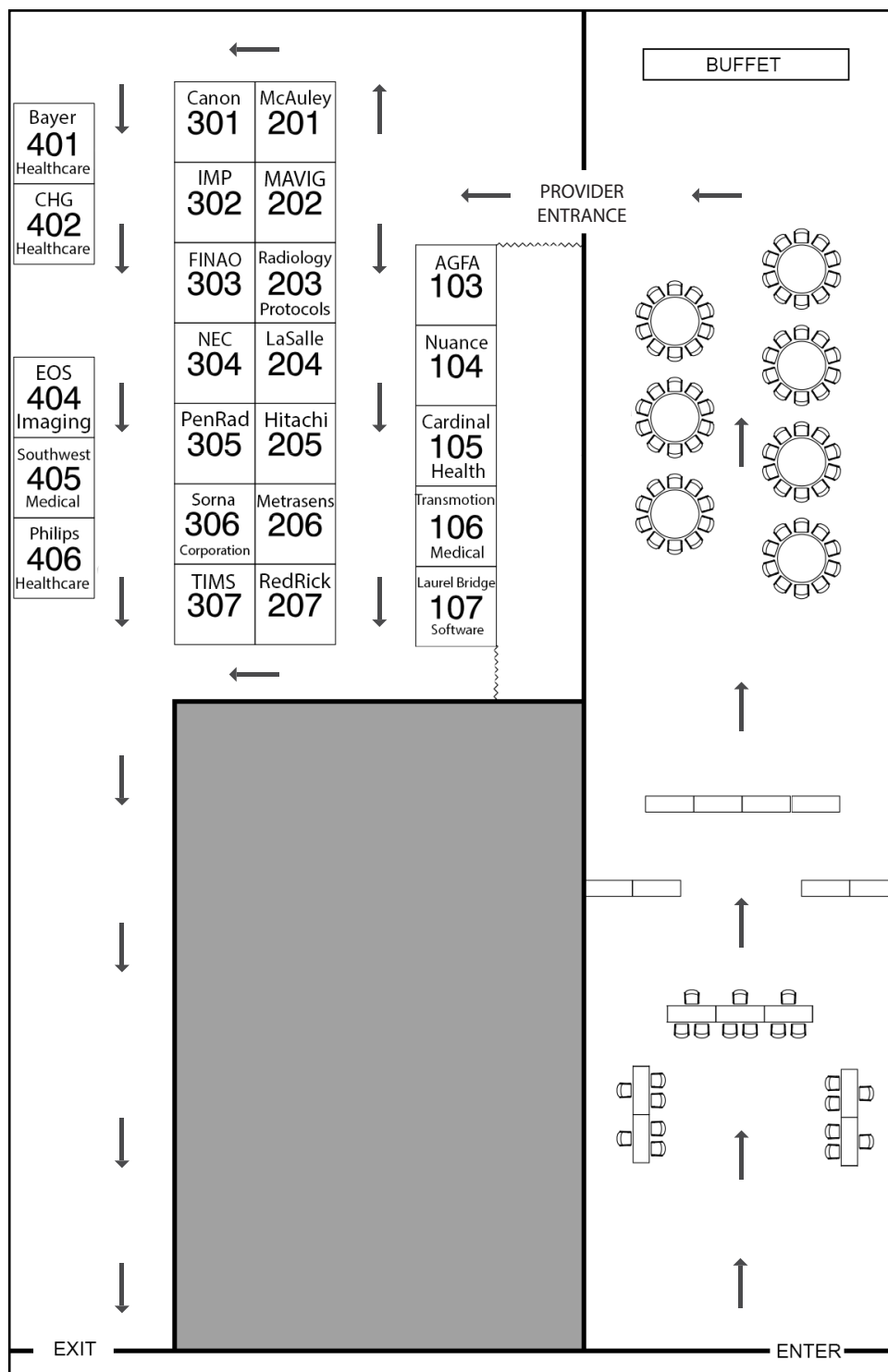
SPECIAL ONSITE PRICING IS \$2,500
Increases to \$3,000 after 12 noon on March 6th, 2015.
Premium and corner spaces, add an additional \$250.

For more information about this exciting opportunity, contact:
Dan Jewell at Dan.Jewell@HLTHCP.com - (727) 816-9700



OCEANS BALLROOM

WEDNESDAY MARCH 4 • 12:00 pm - 4:00 pm





DON'T MISS THE HOSPITALITY SUITES

Wednesday Night

following our Welcome Reception from 6:30 PM - . . .



HITACHI

Inspire the Next

BE SURE TO VISIT THE TITLE SPONSOR'S SUITE ON THE TENTH FLOOR • PRESIDENTIAL SUITE, ROOM #1094

PROVIDERS:

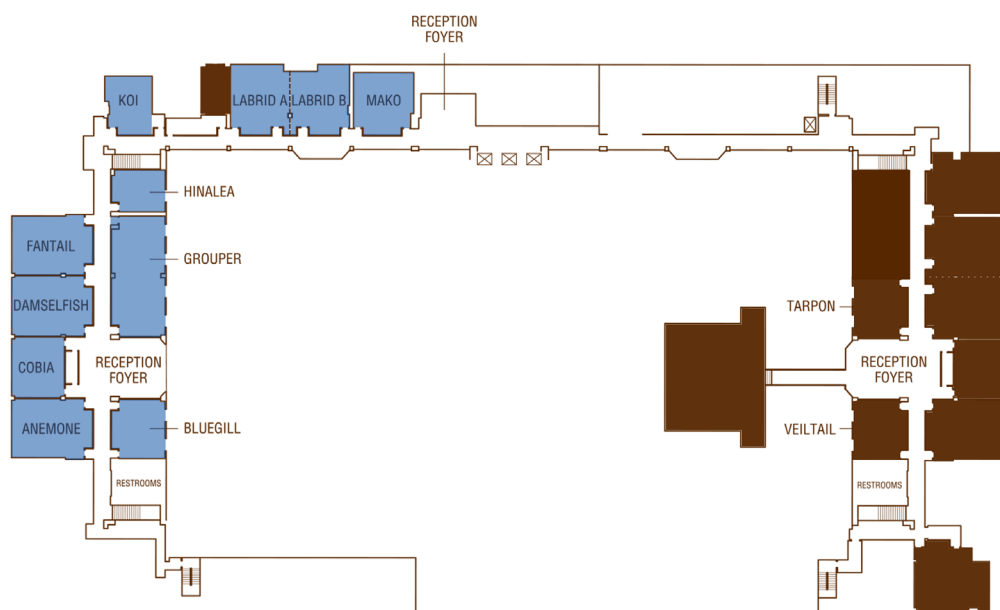
Don't forget your badge – you will need it to enter the hospitality suites. Start your evening in the suite that matches the logo on the back of your badge. If you are scanned into all of the hospitality suites, you will be entered in a drawing for an autographed guitar.

HOSPITALITY SUITES



WEDNESDAY, MARCH 4 • 6:30 pm - ...

SPONSOR	LEVEL	ROOM
Hitachi	Tenth Floor	Presidential Suite Room #1094
Cardinal	Second Floor	Bluegill
Mavig	Second Floor	Damselfish
NEC	Second Floor	Hinalea
Nuance	Second Floor	Fantail
Perceptive Software	Second Floor	Anemone
Radiology Protocols	Second Floor	Cobia
SurMD	Second Floor	Grouper





DINNER & ENTERTAINMENT



JOIN US AT SEAWORLD'S PORTS OF CALL

On Thursday night, dress in your favorite Aloha attire and join us for relaxing Caribbean-themed escape at SeaWorld's Ports of Call. Ports of Call, a nautical wharf-side warehouse district inside SeaWorld Orlando's theme park, is one of the city's premier private event venues set in a lush, tropical landscape complete with waterfalls and two miniature submarines. With live animal experiences, fantastic food, fun music, and an open bar, come prepared for a wonderful night of networking and entertainment.

Trams will run continuously between the Renaissance Orlando at SeaWorld and Ports of Call from 5:50 pm - 10:00 pm.

SPONSORED BY

GCX
Mounting Solutions

NEC
NEC Display Solutions



WEST PHYSICS®

The Medical Physics Experts

Joint Commission changes are happening July 1, 2015.

Just **SOME** of the new requirements:

- Annual physicist equipment surveys of advanced imaging equipment
- New medical physicist qualification requirements
- New shielding design requirements
- New ALARA review requirements
- Expanded MRI safety requirements
- Dose incident tracking & analysis

And there are many more...

Are **YOU** ready?

As the leading accreditation services provider in the U.S., **WEST PHYSICS®** knows these requirements in depth.

Not only will our team perform the required physics testing for your organization; our compliance experts will show you how to meet ALL of the new standards in the ***simplest & most cost-effective*** way.



Let the medical physics experts help you meet these new requirements!
Call or email us today!

www.westphysics.com | 866•275•WEST (9378) | info@westphysics.com

3825 Paces Walk SE | Suite 250 | Atlanta, GA | 30339

Atlanta | Los Angeles | Chicago | Dallas | Philadelphia | Boston | Seattle | Orlando | Kansas City | Albuquerque





Over the past year, this committee volunteered their valuable time to help us create an outstanding agenda. We appreciate their energy and want to recognize this esteemed group for all their hard work. Without their expertise, this event would not have been possible.



RADIOLOGY & IMAGING BOARD CHAIR:

KATHLEEN HOLTON, BSRT
Director, Medical Imaging
St. Vincent Hospital (Ascension Health)
Indianapolis, IN

Neil Burgess
President & CEO
MMR Holdings, Inc. • Glen Allen, VA

Louis Lannum
Director, Enterprise Imaging
Cleveland Clinic • Cleveland, OH

Gina Collier McCormack, BSRT(R)
Senior Contract Mgr, Diagnostic Imaging
Resource Optimization & Innovation (ROi) • St. Louis, MO

Brian Phelan
Vice President & General Manager
RADNET, Inc. (260 Locations) • Los Angeles, CA

Gerard Durney, MBA
Director of Operations
Overlook Medical Center • Summit, NJ

Rick Phillips, BS, RT(R)(MR)(CT), ARRT, CRA
Vice President, Supply Chain and Clinical Services
LifePoint Hospitals, Inc. • Brentwood, TN

David Hellams, CRA
Director, Radiology Services
Greenville Health System • Greenville, SC

Cindy Winter, Ph.D., CRA
Director of Imaging Services
Tallahassee Memorial HealthCare • Tallahassee, FL

Ronald Zink
Director, Clinical Services
Temple University Hospital • Philadelphia, PA



THURSDAY MARCH 5

OPENING REMARKS AND KEYNOTE ADDRESS

8:00 AM - 9:30 AM • CRYSTAL BALLROOM
1.5 hours



KEYNOTE SPEAKER: Lt. Col Rob "Waldo" Waldman

Flying solo? You might think so. But take a good look around...you have support staff. You have managers. You have suppliers and distributors. And you have colleagues, family members and significant others. By placing your trust in those around you — you can overcome obstacles, adapt to change, serve your customer, and achieve success during adverse times. **By placing your trust in your Wingmen and by being a Wingman to others, there is no mission you can't complete in business or life.**

Lt. Col. Rob "Waldo" Waldman overcame a lifelong battle with claustrophobia and a fear of heights to become a combat decorated U.S. Air Force fighter pilot and highly successful businessman and entrepreneur. His motto is **Winners Never Fly Solo!**



Through his captivating personal and business related stories and high energy videos, learn how you, like a fighter pilot, can succeed in highly competitive and demanding environments. Discover how to prepare diligently for every mission; employ loyal Wingmen to promote integrity and trust; and lead your team with courage, compassion and conviction. Be inspired to take to the skies knowing that you have

Wingmen to help you face challenges and change with confidence while maximizing your potential in all aspects of your life.

LEARNING OBJECTIVES:

At the completion of this activity, the participant will be able to:

- Employ Loyal Wingmen to Promote Communication, Integrity, and Trust
- "Check-6" to Develop a Culture of Teamwork and Mutual Support
- "Chair-Fly" Sales Missions to Increase Revenues
- Transform Relationships into Revenue
- Convert Fear into Focus
- Lead with Courage and Compassion



THURSDAY MARCH 5

THE EMERGING ERA OF CHOICE - PART 1

9:45 AM - 10:45 AM • Crystal Ballroom
2 hours / Parts 1 & 2



SPEAKER: FRED BAYON

Managing Director
The Advisory Board Company

Fred Bayon is a Managing Director and the national spokesperson for the Advisory Board Company, a for-profit, publicly-traded research firm serving more than 2,600 of America's leading hospitals and health systems. In this capacity, Fred presents the firm's findings on frontier strategic and clinical best practices. His areas of focus include general hospital administration and management, health system economics, and health policy. He is a frequent lecturer for the flagship Health Care Advisory Board program in addition to the Philanthropy Leadership Council and Cardiovascular Roundtable. At last count, he has presented in 45 states and made over 500 presentations on behalf of the company and its members. Before joining the Advisory Board in 2005, Fred earned a Master's Degree in Education from Columbia University. He received his Bachelor of Arts from Dartmouth College. When not traveling the country, he enjoys spending time in New England with his family and following the Boston Red Sox.



Hospitals, health systems, and other providers can no longer rely on the same well-worn channels for growth that have sustained them in the past. New channels — for insurance coverage, for referrals, for patient access — are disrupting established patterns. But that disruption is an opportunity for progressive organizations to deliver greater value and win market preference in new ways. The

presentation, the most recent iteration of the Advisory Board Company's "State of the Union," clarifies this opportunity.

LEARNING OBJECTIVES:

At the completion of this activity, the participant will be able to:

- Understand the impact of insurance exchanges and other vehicles for individualized coverage decisions
- Recognize the opportunities and threats posed by narrow networks and new network assemblers
- Compete for lives at the point of network assembly AND for volumes at the point of care
- Focus on the most important aspects of value in a competitive, retail market

THE EMERGING ERA OF CHOICE - PART 2

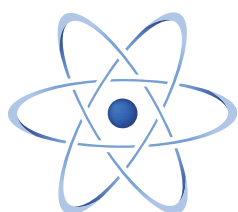
11:00 AM - 12:00 PM • Crystal Ballroom
2 hours / Parts 1 & 2



THURSDAY MARCH 5

EMERGENCY PREPAREDNESS FOR IMAGING SERVICES

1:15 PM - 2:30 PM • Crystal Ballroom
1.25 hours



Radiology **Protocols**

Speaker: Steve Bollin

Regional VP, Support Services

Mercy Health East Communities

Steve Bollin is the Regional Vice President of Support Services for Mercy Health East Communities. He is also accountable Vice President for Safety and Security for the Mercy Health Ministry. Areas of responsibility include Imaging Services, Radiation Safety, Public Safety and Security, Facilities/Maintenance, Food and Nutrition Services, and Environmental Services. In his current role, Steve has been involved in many system-wide initiatives improving emergency management/response, including development of standardized emergency codes and plans. Much of what has been applied is a result of learning gained in 2011 from the recovery and rebuilding efforts at Mercy Hospital Joplin, after a direct hit by an EF-5 tornado.



Steve's career in health care spans over 30 years, including 16 years of direct care experience as a Radiologic Technologist and more than 14 years as a Manager and Administrator. Steve has worked as a consultant for Customer Service and Patient Satisfaction, Clinical Engineering Services and Contracting, Site Design, Equipment Purchasing, and Performance Improvement. Steve holds a Master's Degree in Public & Healthcare Administration and a Bachelor's Degree in Allied Health Professions from The Ohio State University. He also holds an Associate's Degree in Radiologic Technology from Midwestern State University. He is a Veteran after serving

honorably in the U.S. Armed Forces from 1982-1988. Steve has been married to Christine for 30 years and has two children and one granddaughter.

LEARNING OBJECTIVES:

At the completion of this activity, the participant will be able to:

- Preparing for Disasters: Discuss what Imaging Departments can do to prepare for various natural and man-made disasters, including some lessons learned
- Emergency Response Plan: How to develop internal action plans coordinated with facility emergency plans so coworkers know what to do during an emergency, referencing specific recent natural disasters
- Recovering from Disasters: Review what Imaging departments can expect after disasters and discuss their role in the recovery process



FRIDAY MARCH 6

INSIDE THE NFL (NATIONAL FOOTBALL LEAGUE)

8:00 AM - 9:00 AM • Crystal Ballroom
1 hour

Speaker: ANTHONY C. ANDERSON RT(R)

Radiologic Technologist
Seattle Seahawks

Anthony Anderson is the Radiologic Technologist for the Seattle Seahawks of the NFL and a nationally known speaker and trainer. He is also the Regional Sales Director for CMS Imaging. He has written numerous papers and articles on Surgical Radiology, Trauma, and Sports Imaging and also is the author of the book, *The Radiologic Technologist Handbook of Surgical Procedures*.

Anthony is a certified registered Radiologist Technologist with over 20 years' experience performing Surgical Procedures, Trauma, as well as Research and Product Development.



He is a member of the ASRT (American Society of Radiologic Technologist) and the ARRT (American Registry of Radiologic Technologist). He graduated from the Academy of Health Sciences at Fort Sam Houston TX.

This course will give attendees an inside look at what happens on "Game Day" of an NFL football game from the radiologic technologist point of view. This course will also take a look at the difficulties of imaging professional athletes with limited time and patient access.

LEARNING OBJECTIVES:

At the completion of this activity, the participant will be able to:

- Provide the attendee with an inside look at professional football radiology requirements, and the difficulties associated with imaging professional athletes
- Review the ways in which imaging advancements are helping with the care of professional athletes
- Examine the trauma and protocols specific to imaging that have changed and implemented within the National Football League

ACCREDITATION INFORMATION



These activities are approved for Category A credit by the ASRT.

These courses have been approved by AHRA: The Association for Medical Imaging Management for Category A, ARRT continuing education credits.

PLEASE NOTE: BE SURE TO HAVE YOUR NAME BADGE SCANNED BEFORE EACH EDUCATIONAL SESSION. CE CREDIT WILL BE AWARDED BASED ON BADGE SCANS PER SESSION.

VISIT US AT **BOOTH 205**

OVAL
Echelon™

SPEED CLARITY **FASTER SCAN TIMES**

RAPID-RADAR takes Hitachi's leadership in motion compensation to new levels. By combining RAPID parallel imaging with RADAR motion compensation you can now achieve clear images with faster scan times.

www.hitachimed.com



See the many
clinical benefits
of Oval.

HITACHI
Inspire the Next



OCEANS BALLROOM

Session 1: Thursday, March 5, 3:00 PM - 5:00 PM

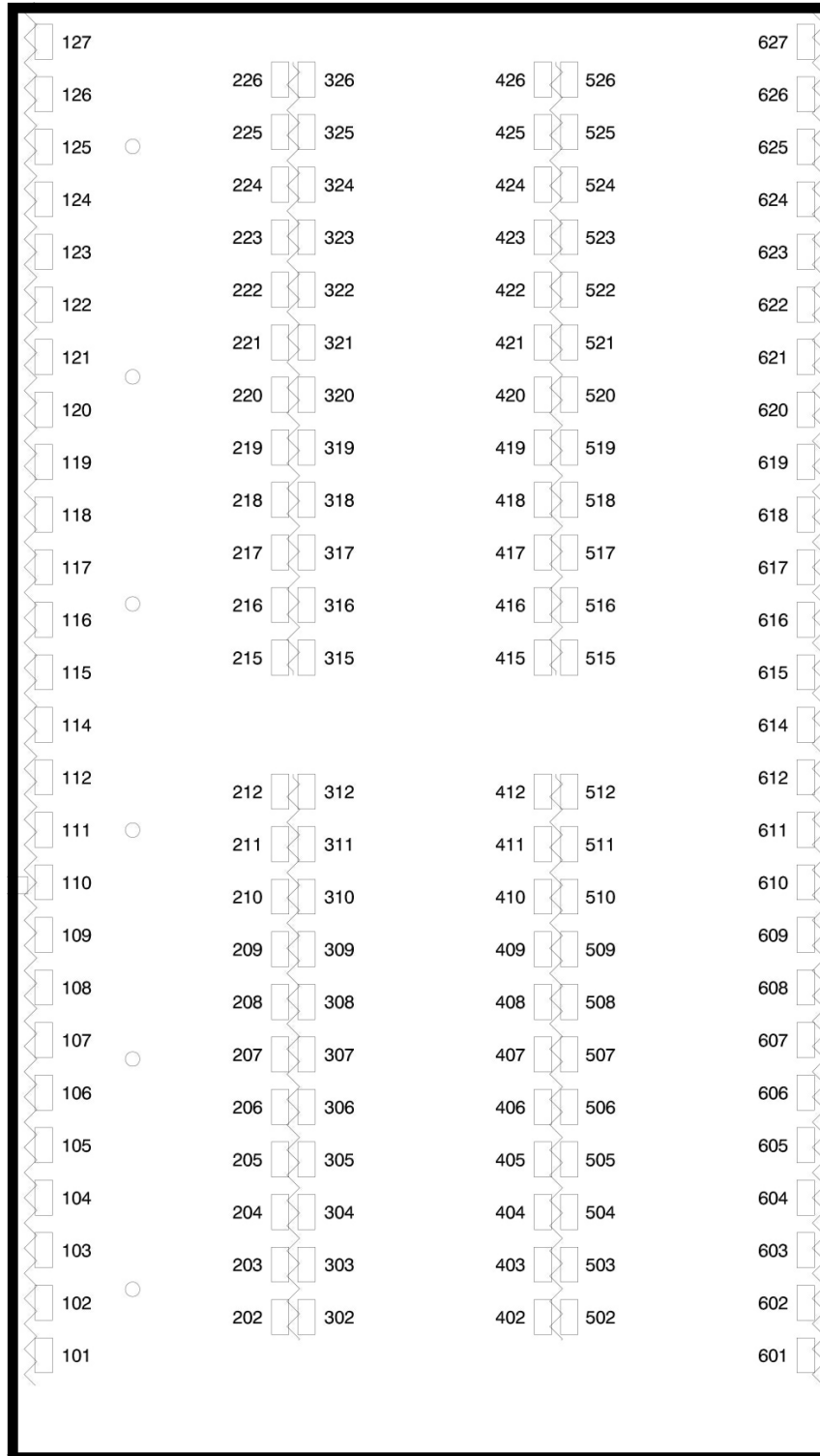
Session 2: Friday, March 6, 9:30 AM - 11:30 AM

In the Reverse EXPO sessions, Hospital Radiology Directors, along with GPO Executives, host exhibit tables while suppliers walk through the hall. This unique event is a fun change of pace from traditional expo formats and provides the best networking opportunity for both providers and suppliers.

On the next page, you will find a map outlining the location of each booth in the hall. Please refer to the list of specific booth assignments (pages 22 - 31) to locate each provider executive during the Reverse EXPO.

SPONSORED BY:

perceptivesoftware
from Lexmark



PROVIDER ATTENDEES LIST BY FACILITY



Alexian Brothers Medical Center

Booth # 101
Elk Grove Village, IL
Steven Jung, MS, RT (R)(CT)
Director, Diagnostic Imaging

Banner Del E. Webb Medical Center

Booth # 102
Sun City West, AZ
Larry Bonno
Administrative Director - Medical Imaging

Baptist Health System, BMC

Booth # 422
San Antonio, TX
Willie Arbuthnot, RT
Director Imaging Services

BJC HealthCare

Booth # 103
St. Louis, MO
Jeffrey Dunkle, MBA
Sourcing Manager, Capital

Boulder Community Hospital

Booth # 106
Boulder, CO
Joseph Mikoni
Director of Imaging

Centegra Hospital System

Booth # 107
McHenry, IL
John Heinrich
Director, Medical Imaging

Chippenham Hospital/HCA

Booth # 108
Richmond, VA
Fred Parker, Jr, RT, MS
Director, Radiology Services and Bio Med

Christian Hospital Northeast

Booth # 104
St. Louis, MO
Jeff Dossett
Director of Imaging

Citrus Memorial Health System

Booth # 109
Inverness, FL
David Wells
Director, Diagnostic Imaging

Columbus Regional Hospital

Booth # 110
Columbus, IN
Bill Algee
Manager of Imaging Services

Community Cancer Center South

Booth # 111
Indianapolis, IN
Janice Walker, BS, CNMT
Imaging/Relations Manager

Community Hospital East

Booth # 112
Indianapolis, IN
Tom Jessie
Manager, Medical Imaging

Community Hospital East

Booth # 114
Indianapolis, IN
Kathy Steffen
Radiology Director

Community Hospital of San Bernardino

Booth # 116
San Bernardino, CA
John Cairney, RT,CRT,ARRT,MS
Director, Department of Medical Imaging

Conway Regional Medical Center

Booth # 117
Conway, AR
Daniel Whitt, RT(R), CRA
Director, Imaging Services

Cox Health

Booth # 118
Springfield, MO
Shawn Snider, RT(R)(M), MS
Administrative Director, Radiology Services

Crouse Hospital

Booth # 119
Syracuse, NY
Bradford Hellwig, RT, CNMT CRA
Administrative Director

DCH Regional Medical Center

Booth # 120
Tuscaloosa, AL
Jimmy Smith, Jr., RT(R), MBA
Director of Imaging Services

Department of Veterans Affairs

Booth # 121
Portland, OR
Ron Boucher, MD
Chief of Imaging Services

Desert Radiologists (5 Locations)

Booth # 612
Las Vegas, NV
William Moore, II, MBA, CRA
CEO

Doctors Medical Center of Modesto

Booth # 122
Modesto, CA
Courtney Murray
Director, Diagnostic Imaging

Einstein Medical Center

Booth # 123
Philadelphia, PA
Christine Sawycky, BS, RT(R)
Director, Radiology Services

Florida Hospital - DeLand

Booth # 202
DeLand, FL
Wesley Harden
Director of Radiology

Florida Hospital Fish Memorial (Adventist)

Booth # 203
Orange City, FL
Robert Whitehead
Imaging Director

Florida Hospital Memorial Medical Center

Booth # 204
Ormond Beach, FL
Nick Creech, MS, ARRT, ARDMS, CRA
Director of Radiology

FMOL Health System

Booth # 125
Baton Rouge, LA
Dorrie Staal, RN
Resource Utilization Manager

Franciscan St. Elizabeth Health (AHRA)

Booth # 127
Lafayette, IN
Carlos Vasquez, CRA FAHRA FACHE
Director, Radiology Services & Facilities Mgmt

Franklin Woods Hospital

Booth # 415
Johnson City, TN
Patti McNutt
Technical Manager, Imaging

Froedtert Health Clinics (23 Locations)

Booth # 614
West Bend, WI
Santa Maria Dobrogowski, BS, RT(R), CRA
Radiology Manager

Fulton County Health Center

Booth # 208
Wauseon, OH
Barbara Gibson, RT(R),RDMS,CRA
Radiology Director

George Washington University Hospital

Booth # 209
Washington, DC
Mark Lerner
Division Director Radiological Operations

Grandview Medical Center

Booth # 210
Dayton, OH
Mark Rita, RT MHA
Radiology Director

Greenville Health System

Booth # 211
Greenville, SC
David Hellams, CRA
Director, Radiology Services

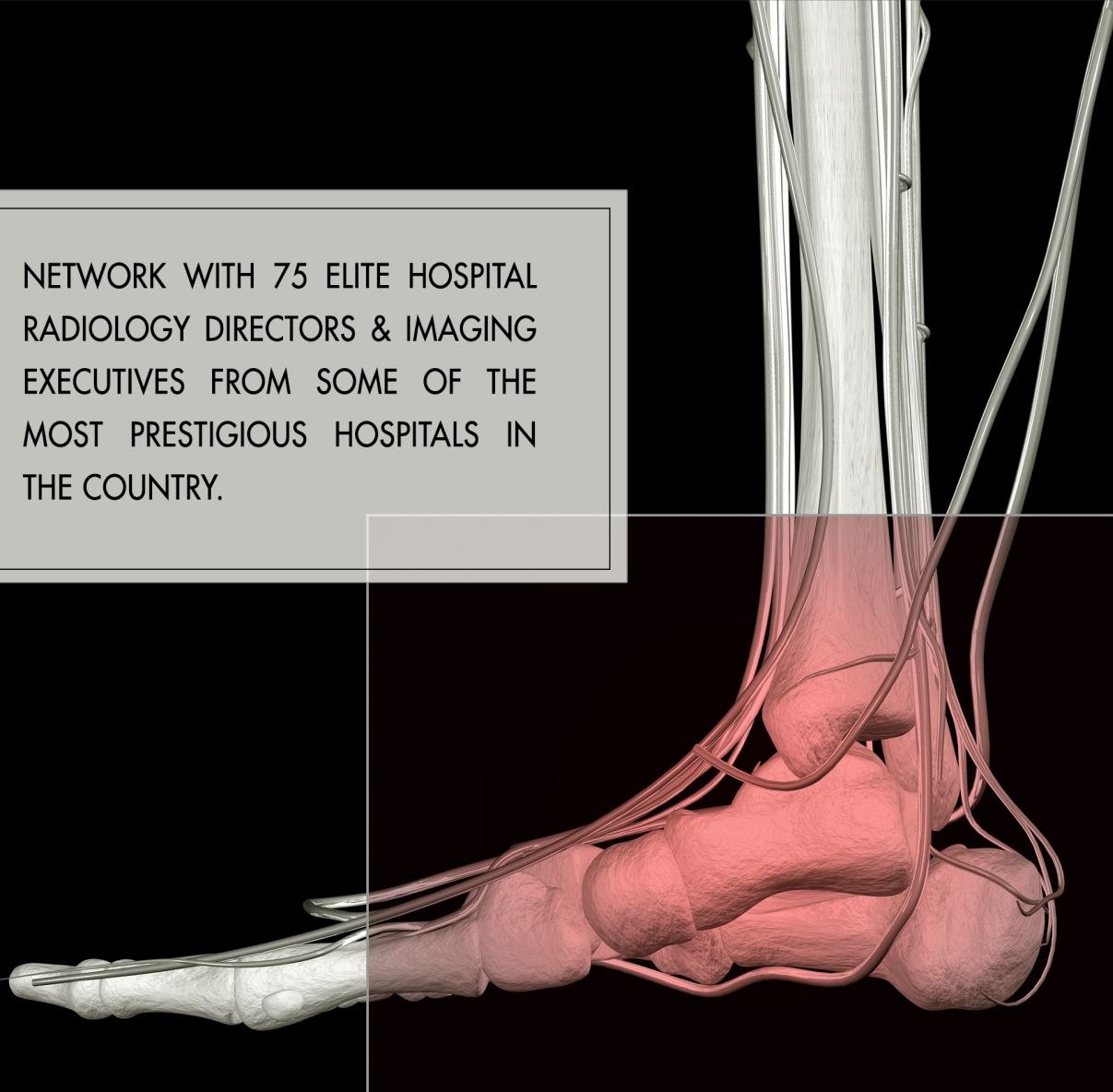


HEALTH CONNECT PARTNERS

RADIOLOGY & IMAGING

CONFERENCE | **FALL 15**

October 5 - 7 • Los Angeles, CA



NETWORK WITH 75 ELITE HOSPITAL
RADIOLOGY DIRECTORS & IMAGING
EXECUTIVES FROM SOME OF THE
MOST PRESTIGIOUS HOSPITALS IN
THE COUNTRY.

TAKE ADVANTAGE OF OUR SPECIAL ONSITE PRICING
REGISTER TODAY: **\$1,495 / EACH**
UNTIL 12 NOON, FRIDAY 3/6

PROVIDER ATTENDEES LIST BY FACILITY



Gwinnett Breast Center/GMC
Booth # 212
Lawrenceville, GA
Michelle Salvemini-Proby, RT(R)(M)
Women's Imaging (Breast) Manager

Hahnemann University Hospital
Booth # 322
Philadelphia, PA
Marc Caballero
Director of Radiology

Hancock Regional Hospital
Booth # 115
Greenfield, IN
Lisa Wood, RT CRA
Director of Radiology

HCA Eastern Idaho Regional Medical Center
Booth # 215
Idaho Falls, ID
Debra Barlow, RT(R)
Director, Imaging & Rad Onc Services

Heritage Valley Health Systems
Booth # 217
Beaver, PA
Roland McGraner, A.A.,B.S.,FAHRA
System Director of Imaging Services

High Point Regional Hospital
Booth # 218
High Point, NC
Karen Meadows
Imaging Manager

Houston Healthcare System
Booth # 219
Warner Robins, GA
Judy Goheen
Manager of Imaging Services

Houston Methodist West Hospital
Booth # 220
Houston, TX
Dahna Richardson-Caston, RT(R), ARRT
Manager of Imaging Services

Huntsville Hospital Health System
Booth # 221
Huntsville, AL
Rhonda Atchley, RT
Director, Imaging Services

Indian Path Medical Center (MSHA)
Booth # 416
Kingsport, TN
Susan Phillips
Radiology Director

Indiana University Health
Booth # 222
Indianapolis, IN
Todd Stanley
Administrative Director of Imaging

Indiana University Hospital
Booth # 223
Indianapolis, IN
Shelli Kordes
Director of Radiology

John C. Lincoln - Breast Hlth & Research Ctr
Booth # 615
Phoenix, AZ
Sherry Gage, RT(R)(M)
Director

John C. Lincoln Hospital Network
Booth # 225
Phoenix, AZ
Steven Hardin
Senior Systems Director of Diagnostic Imaging

Johnston Memorial Hospital
Booth # 417
Abingdon, VA
Paul Lewey
Diagnostic Imaging Technical Manager

Laughlin Memorial Hospital
Booth # 226
Greeneville, TN
Jesse Taylor
Director of Medical Imaging

Lawrence & Memorial and Westerly Hospitals
Booth # 302
New London, CT
Donna Blakely
Diagnostic Imaging Director

Lehigh Valley Hospital and Health Network
Booth # 303
Allentown, PA
Cathleen Story
Administrator, Diagnostic Services

LifePoint Hospitals, Inc.
Booth # 304
Brentwood, TN
Melissa Lejsek, RT(R)(M)
HSC Clinical Services Manager

Lourdes Hospital
Booth # 306
Binghamton, NY
Brian Wetzel, RT R,N,CNMT
Director of Medical Imaging

Lowell General Hospital
Booth # 307
Lowell, MA
Judy Canal, BS, MS
Director of Radiology

MAGNET GROUP - G10
Booth # 308
Meriden, CT
Diane Mase
VP Business Development

Manchester Memorial Hospital
Booth # 206
Manchester, KY
Chris Carnes, RT
Director of Radiology

Marion General Hospital
Booth # 309
Marion, IN
Lynn Imel, BS, CRA, RT(R)(M), RVT
Administrative Director of Radiology

Mary Black Health System
Booth # 310
Spartanburg, SC
Richard Grounds
Radiology Director

Maury Regional Hospital
Booth # 311
Columbia, TN
Pam Williams, BSRT,(R) (T)
Radiology Director

McFarland Clinic (13 Locations)
Booth # 616
Ames, IA
Deb Thompson, CRA
Imaging Services Director

McLaren - Greater Lansing
Booth # 312
Lansing, MI
John Patterson
Administrator

McLeod Regional Medical Center
Booth # 315
Florence, SC
David Poston, RTR, RDMS
Director of Radiology

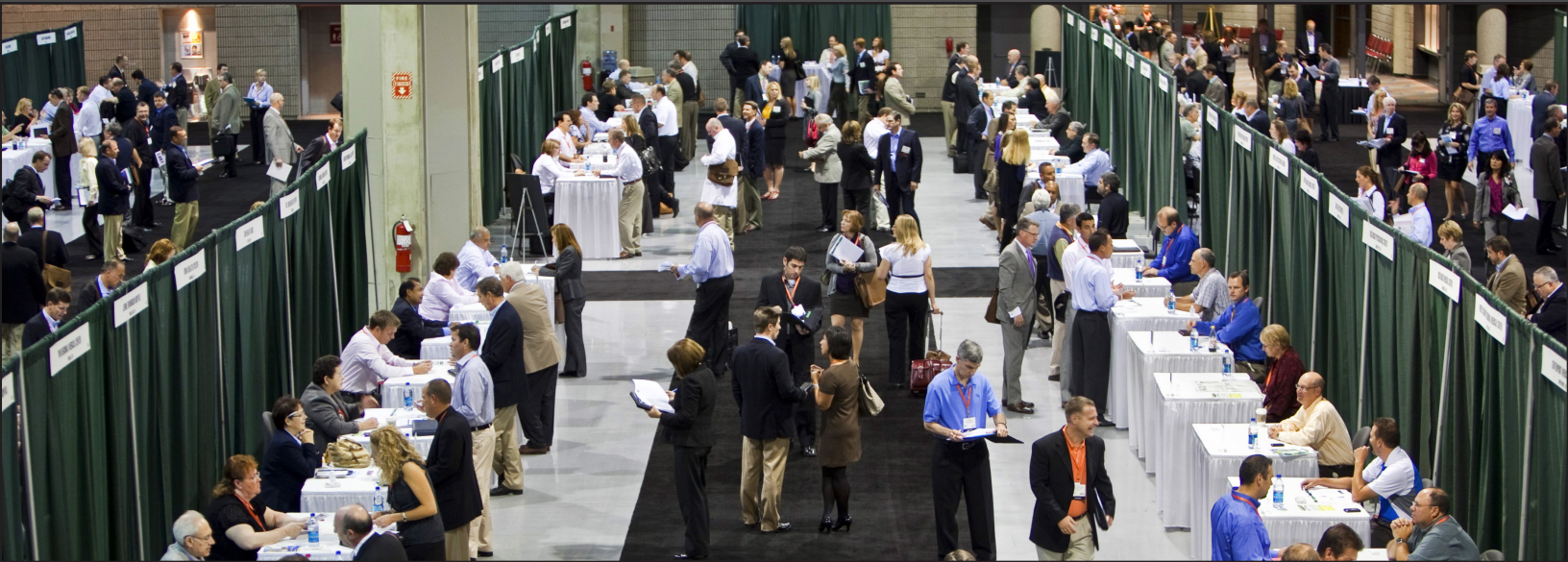
MedAssets
Booth # 316
Alpharetta, GA
Christopher Stegura
Client Manager

MedQuest Associates, Inc. (75 Locations)
Booth # 617
Alpharetta, GA
Aldrey Pearson
Director of Clinical Information

Med-Share Mobile Diagnostic Imaging
Booth # 618
Southfield, MI
Milan Gandhi
VP

Memorial Hermann Healthcare System
Booth # 317
Houston, TX
Vinoth Joseph
Radiology Manager

NEW CONCURRENT CONFERENCES



REGISTER FOR BOTH TO TAKE ADVANTAGE OF

- 2 EVENTS, SAME DATES
- 8 FULL HOURS OF REVERSE EXPO TIME
 - 4 HOURS OF RADIOLOGY REVERSE EXPO
 - 4 HOURS OF I.T. REVERSE EXPO

Beginning this fall, we are excited to introduce a groundbreaking format which will allow you to network simultaneously with Hospital CIOs & IT Executives and Hospital Radiology & Imaging Directors. With our **new concurrent conference model**, you will have opportunities to make even more connections during networking events - (Meals, Hospitality Suites, and Dinner & Entertainment) - while maintaining dedicated focus on your target audience during the Reverse EXPO and Educational Sessions.



HEALTH
CONNECT
PARTNERS

For More Information, Contact: Dan Jewell
Dan.Jewell@HLTHCP.com • (727) 816-9700

PROVIDER ATTENDEES LIST BY FACILITY



Memorial Hermann Katy Hospital
Booth # 318
Katy, TX
Stephen Dinwiddie, MSRT(R)
Director of Imaging Services

Memorial Hospital at Gulfport
Booth # 319
Gulfport, MS
Diane Lind, A.R.R.T. B.S. (CT)
Director of Imaging Services

Mercy Fitzgerald/Mercy Philadelphia Hospital
Booth # 323
Darby, PA
Lisa Curtin
Clinical Manager for Radiology

Mercy Health Muskegon
Booth # 320
Muskegon, MI
Brian Dethloff, RT (N)
Director, Imaging Services

Mercy Hospital - Iowa City
Booth # 321
Iowa City, IA
Heidi Berns, MS, RT(R)(MR)
Administrative Director of Radiology

Mercy Hospital St. Louis
Booth # 402
St Louis, MO
Julie Ross, RT (R), MBA
Director, Imaging Services

Methodist Hospitals, Inc.
Booth # 326
Merrillville, IN
Cheryl Hescher, MBA, RT(R)(M) CRA
Imaging Manager

Methodist University Hospital
Booth # 405
Memphis, TN
Mary Carroll
Director of Radiology

Metropolitan Diagnostic Imaging (4 Locations)
Booth # 611
Garden City, NY
Alan Winakor
President

Middlesex Hospital
Booth # 406
Middletown, CT
Sandra Dean
Radiology Director

Mission Health System
Booth # 407
Asheville, NC
John Campbell, FAHRA, CRA
Chief Imaging Informatics Officer

Missouri Baptist Medical Center
Booth # 105
St Louis, MO
Vivian Prinster, MA, CRA
Director, Imaging

Mobile Infirmiry Medical Center
Booth # 408
Mobile, AL
Anthony Mosley
Director of Radiology and Imaging

Moore Center for Orthopedics
Booth # 619
Columbia, SC
Mary Morris
Director of Imaging

Mountain States Health Alliance
Booth # 418
Johnson City, TN
Judy Mason, RT(R)
Director of Imaging

Mountain Vista Medical Center (IASIS)
Booth # 409
Mesa, AZ
Georgine Lonson, RT(ARRT)(R)(M)
Director, Imaging Services

Nacogdoches Memorial Hospital
Booth # 411
Nacogdoches, TX
Freddie Gibson
RAD Director

Nash Health Care System
Booth # 412
Rocky Mount, NC
Jay Streater
Director of Imaging Services

NCH Healthcare System
Booth # 420
Naples, FL
Jim Bates
Director of Imaging

Nevada Regional Medical Center
Booth # 421
Nevada, MO
Todd Fine
Director of Diagnostic Imaging

North Central Baptist Hospital
Booth # 423
San Antonio, TX
Raul Bocanegra Jr, MAA
Administrative Director of Imaging Services

Norton Community Hospital
Booth # 419
Johnson City, TN
Nerisa Long, B.B.A. RT (R) (M) (BS)
Manager of Diagnostic Imaging

NYU Langone Medical Center
Booth # 424
New York, NY
Eric Fixsen, MBA
Director of Radiology

Ocala Regional Medical Center
Booth # 425
Ocala, FL
Amy Whittemore
Imaging Manager

Ocean Medical Center
Booth # 426
Brick, NJ
Libby Naimo, MBA CRA
Manager, Imaging Services

OpenSided MRI/MMR Holdings Inc (10 Locations)
Booth # 620
Glen Allen, VA
Neil Burgess
President & CEO

Our Lady of the Lake Regional Medical Center
Booth # 126
Baton Rouge, LA
Jamie Murphy, RT,R
Radiology Director

Outpatient Imaging Affiliates (28+ Locations)
Booth # 621
Franklin, TN
Creighton Cook, MBA
Senior Director of Business Development

Overlook Medical Center
Booth # 502
Summit, NJ
Julie Olmsted
Radiology Manager

Overlook Medical Ctr, Atlantic Health System
Booth # 503
Summit, NJ
Gerard Durney, MBA
Director of Operations

Palmetto Health Baptist Columbia
Booth # 506
Columbia, SC
Jack Morris, MHA, RT(R)
Director of Imaging Services

Phoebe Putney Memorial Hospital
Booth # 507
Albany, GA
Timothy Davis, R.T. (R) (ARRT)
PACS Administrator

Piedmont Fayette Hospital
Booth # 508
Fayetteville, GA
Kari Prince
Sr. Director Radiology Imaging Services

Molecular Breast Imaging

detects cancers missed by mammography



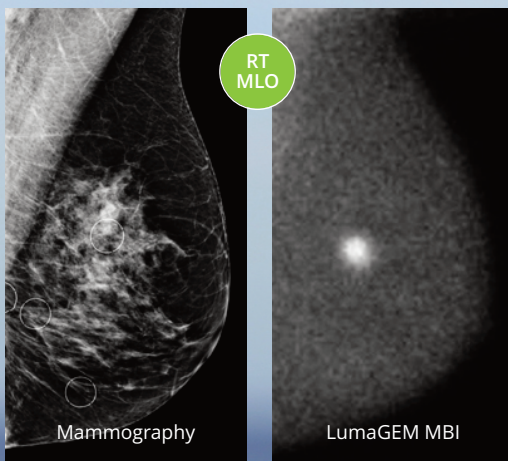
The LumaGEM Benefits

- High intrinsic spatial resolution (1.6mm)
- High sensitivity (91%*)
- High specificity (93%*)
- Low Dose (2.4mSv whole body**)

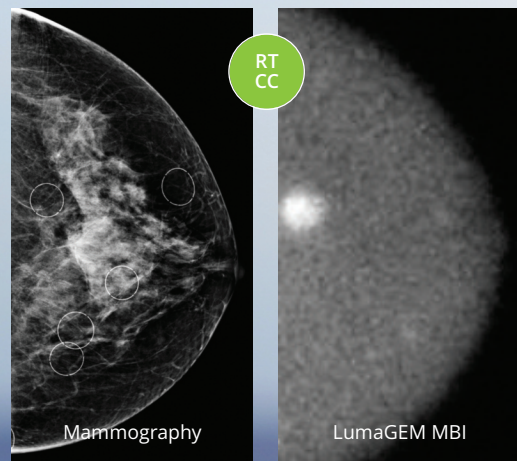
“ MBI has provided an efficient, physiologically based inexpensive tool to help further screen non high-risk patients who have a mammogram that is limited by density or complexity. It also is a great problem solver and offers an alternative modality for high-risk/pre-operative women who can't have or tolerate MRI. ”

— Robin B. Shermis, M.D., M.P.H., F.A.C.R.
ProMedica Toledo Hospital

LumaGEM® Molecular Breast Imaging (MBI) can be used for high-sensitivity and high-specificity problem solving for women with suspicious findings and difficult-to-interpret mammograms.



>90% SENSITIVITY WITH MBI



>93% SPECIFICITY WITH MBI

LumaGEM MBI Reveals Breast Cancer on Negative Mammogram

*Combined with Mammo-Rhodes DJ, Hruska CB Phillips SW, Whaley DH, O'Connor MK. Dedicated Dual Head Gamma Imaging for Breast Cancer Screening in Women with Mammographically Dense Breasts. Radiology. 2011; 258:106-118.

**Hendrick, RE. Radiation Doses and Cancer Risk from Breast Imaging Studies. Radiology. 2010;257:246-253.

**O'Connor, MK, Rhodes, DJ, Hruska, CB, Clancy, CB, Vetter, RJ. Comparison of Radiation Exposure and Associated Radiation-induced Cancer Risks from Mammography and Molecular Imaging of the Breast. Med Phys, 2010;37:6187-6198.

Gamma Medica, Inc.

12 Manor Parkway, Unit 3, Salem, NH 03079

Toll Free: +1 888.720.3152

Tel: +1 603.952.4441

Fax: +1 603.870.8045

Email: info@gammamedica.com

www.gammamedica.com





SHOWCASE



REVERSE EXPO



HEALTH CONNECT PARTNERS

HOSPITAL & HEALTHCARE I.T.

CONFERENCE | **FALL 15**
October 5 - 7 • Los Angeles, CA

ONSITE REGISTRATION
\$1,795 PER ATTENDEE
UNTIL FRIDAY, MARCH 6TH

125 Hospital CIOs & IT Directors



HEALTH CONNECT PARTNERS

RADIOLOGY & IMAGING

CONFERENCE | **FALL 15**
October 5 - 7 • Los Angeles, CA

ONSITE REGISTRATION
\$1,495 PER ATTENDEE
UNTIL FRIDAY, MARCH 6TH

75 Hospital Radiology Directors

ONSITE PACKAGE PRICE IS \$2,990 UNTIL 12 NOON, FRIDAY, MARCH 6TH
FOR REGISTRATION AT BOTH THE **2015 FALL**
HOSPITAL & HEALTHCARE I.T. AND RADIOLOGY & IMAGING CONFERENCES

FALL 2015

Visit us at our registration desk or help desks in the expo hall to register today at this special rate. At noon on Friday, March 6, 2015, the package price increases to \$3,290 with a deadline of May 29, 2015.



NETWORKING



EDUCATION



HEALTH CONNECT PARTNERS

HOSPITAL & HEALTHCARE I.T.

CONFERENCE | **SPRING 16**

April 13 -15 • Atlanta, GA

ONSITE REGISTRATION
\$1,795 PER ATTENDEE
UNTIL FRIDAY, MARCH 6TH

125 Hospital CIOs & IT Directors



HEALTH CONNECT PARTNERS

RADIOLOGY & IMAGING

CONFERENCE | **SPRING 16**

April 13 -15 • Atlanta, GA

ONSITE REGISTRATION
\$1,495 PER ATTENDEE
UNTIL FRIDAY, MARCH 6TH

125 Hospital Radiology Directors

ONSITE PACKAGE PRICE IS \$2,990 UNTIL 12 NOON, FRIDAY, MARCH 6TH
FOR REGISTRATION AT BOTH THE 2016 SPRING
HOSPITAL & HEALTHCARE I.T. AND RADIOLOGY & IMAGING CONFERENCES

SPRING 2016

Visit us at our registration desk or help desks in the expo hall to register today at this special rate. At noon on Friday, March 6, 2015, the package price increases to \$3,290 with a deadline of July 31, 2015.

PROVIDER ATTENDEES LIST BY FACILITY



Premier Inc.
Booth # 509
Charlotte, NC
Josh Hilton
Director, Specialist Imaging, Radiation Oncology

Presence Saint Joseph Medical Center
Booth # 324
Joliet, IL
Linda Castello, MA, CRA, RDMS
Dir of Img, Card. Cath. Lab & Ambulatory Services

Progressive Radiology (16 Locations)
Booth # 622
Falls Church, VA
Adam Starr
CEO

Provena St. Joseph Medical Center
Booth # 325
Joliet, IL
Janice Nemri, MS
Chief Ambulatory & Ancillary Services Officer

Radiology Associates of Hartford (3 Locations)
Booth # 623
Hartford, CT
Tawana Haynes, BS RT (R) (M)
Director of Outpatient Operations

RADNET, Inc. (260 Locations)
Booth # 625
Poughkeepsie, NY
Sean Kowaliv
Executive Director of Information Systems

RADNET, Inc. (260 Locations)
Booth # 624
Los Angeles, CA
Brian Phelan
VP & General Manager

Regional Med Ctr-Bayonet Point Hosp (HCA)
Booth # 510
Hudson, FL
Carol Corder, BA ARRT (R) (CV) CRA
Director Imaging Non Invasive Cardiology

Regional Medical Center of San Jose (HCA)
Booth # 511
San Jose, CA
Steven Walters, MS, RT(R)
Director of Diagnostic Imaging

Regional Medical Ctr of Orangeburg & Calhoun
Booth # 512
Orangeburg, SC
Kelly Gartman
Radiology Director

Renown Regional Medical Center
Booth # 515
Reno, NV
Timothy Blakely
Imaging Director

Resource Optimization & Innovation (ROi)
Booth # 403
St. Louis, MO
Gina Collier McCormack, BS,RT(R)
Senior Contract Manager - Diagnostic Imaging

Riley Children's Hospital
Booth # 224
Indianapolis, IN
Kelly Piersall
Radiology Director

RIS Imaging (5 Locations)
Booth # 626
Lakeland, FL
Michael Esposito
Director of Radiology

Rockdale Medical Center
Booth # 305
Conyers, GA
Hollis Tessmer, II MA CRA RT(R)
Director of Imaging Services & Cath Lab

Rush University Medical Center
Booth # 516
Chicago, IL
Bernard Peculis, MS, MBA
Administrative Director

Sampson Regional Medical Center
Booth # 517
Clinton, NC
Wade Wright, MBA, CRA
Dir of Imaging/Cardio/Practice Management

Schneck Medical Center
Booth # 518
Seymour, IN
Rita Baker, MSM, RT (R) (M)
Director Diagnostic Imaging

Sisters of Mercy Health System
Booth # 404
St. Louis, MO
Steven Bollin, Sr, MPA
Regional Vice President, Support Services

Southwest General Hospital (IASIS)
Booth # 410
San Antonio, TX
Jim Benitez
Director of Radiology

Spartanburg Regional Healthcare System
Booth # 519
Spartanburg, SC
Brian Webb
Director, Imaging Services

St. Anthony Medical Center
Booth # 520
Crown Point, IN
Michael Budimir, MHA RT R
Regional Director of Radiology

St. David's Medical Center
Booth # 521
Austin, TX
Wayne Carter
Dir, Med Imaging & Outpatient Cardiovascular

St. Dominic's - Jackson Memorial Hospital
Booth # 522
Jackson, MS
Ronald Volden, BSRT
Director of Diagnostic Imaging

St. Joseph Health - Sonoma County
Booth # 523
Santa Rosa, CA
Norman Shore
Area Imaging and Cardiovascular Director

St. Joseph's Ambulatory Imaging Center
Booth # 505
Carlstadt, NJ
Joanne Durney, MPA RT R M
Imaging Center Administrator, Radiology

St. Joseph's Hospital & Imaging Center
Booth # 504
Carlstadt, NJ
Wilmarie Gramata
Radiology Manager

St. Mary's Hospital (Bon Secours)
Booth # 524
Richmond, VA
John Bailey, CRA
Administrative Director of Radiology

St. Vincent Hospital (Ascension Health)
Booth # 525
Indianapolis, IN
Kathleen Holton, BSRT
Director, Medical Imaging

Swedish American Health System
Booth # 526
Rockford, IL
Brian Johnson, BS, RT(R)
Manager, Medical Imaging

Tallahassee Memorial HealthCare
Booth # 601
Tallahassee, FL
Cindy Winter, Ph.D., CRA
Director of Imaging Services

Tampa Community Hospital
Booth # 602
Tampa, FL
Elizabeth Cueto, RT, R, CIRCC
Director, Diagnostic and CVL Imaging

Texas Health Huguley
Booth # 207
Burlinson, TX
Diane Hanson
Radiology Director



University of Maryland St. Joseph Med Center
Booth # 603
Towson, MD
David Breitfelder, BS, CNMT
Director of Imaging/Cardiology

University of Wisconsin Hospital & Clinics
Booth # 604
Madison, WI
Gina Greenwood, MBA
Director, Radiology Services

Valley Presbyterian Hospital
Booth # 605
Van Nuys, CA
Bryan Henderson, MBA, BSRT(R)
Operational Director of Imaging Services

Wayne Memorial Hospital
Booth # 607
Goldsboro, NC
Malcolm Hinton, RT-R, MR, CT
Administrative Director of Imaging & Cardio Svcs.

WCA Hospital
Booth # 608
Jamestown, NY
Tammara Hodges
Director of Imaging, Cardiology & Oncology

Winthrop University Hospital
Booth # 609
Mineola, NY
Enrico Perez, RT, CRA
Administrative Dir. Department of Radiology

THANKS TO OUR TITLE SPONSOR

HITACHI

Inspire the Next



VISIT US AT **BOOTH 205**

OVAL
ECHELON™

SPEED CLARITY **FASTER SCAN TIMES**

RAPID-RADAR takes Hitachi's leadership in motion compensation to new levels. By combining RAPID parallel imaging with RADAR motion compensation you can now achieve clear images with faster scan times.

www.hitachimed.com



See the many
clinical benefits
of Oval.

HITACHI
Inspire the Next